



Development of disability research in Spain

Maribel Campo & Miguel A. Verdugo
University of Salamanca
Institute on Community Integration (INICO)

Leeds, UK, 8 September 2007

The INICO

The purpose of the University Institute for Community Integration is to carry out **research, specialized training and counselling**, facilitating and improving the quality of life of people who are at a social disadvantage in different contexts throughout the course of their lives: persons with a physical, intellectual or sensory disability, as well as persons with chronic illness, mental health problems and persons from minorities.

The INICO

The Governing Board of the University of Salamanca approved the application for the creation of the Institute on 25 July, 1996

The Ministry of Education and Culture of the Autonomous Regional Government of Castille & Leon approved the creation of the Institute on 26 September, 1997 (Decree 181/1997, Official Bulletin of the Castille & Leon).

Objectives

- Increase and consolidate different lines of research on both the national and international levels relating to persons with a disability, in different contexts: work, education, social and health.

Objectives

- Consolidate specialized post-graduate training for students, researchers and professionals in the field of disabilities, as well as facilitate the development of new training programmes adapted to the changing needs of Services.

Objectives

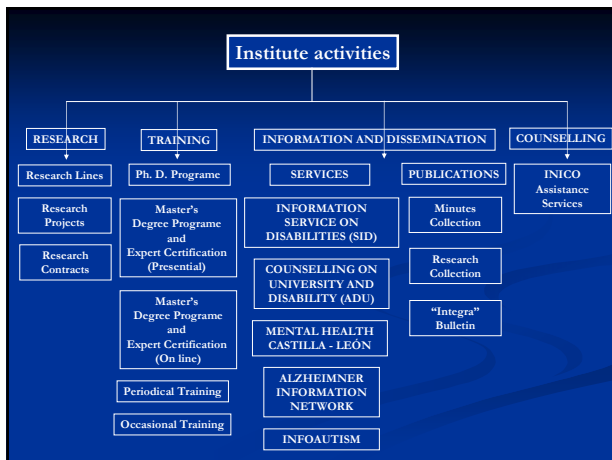
- Foster interdisciplinary collaboration in joint research and specialized training activities with Departments, Centres, and Research Institutes in different countries.

Objectives

- Cover and respond to the needs and demands for expert advice, both in public institutions and Non-Governmental Organizations.

Objectives

- Evaluate and support the development of specific assistential activities and innovative support programmes, at both the individual and family level if the situation so requires.



Research lines

- Prevention Programmes and Interdisciplinary Psychological, Social and Medical Intervention.
- Inclusive Education.
- Work Integration: Professional training and participation in economic life.
- Community Integration and Independent Living: Adaptive and social skills.
- Evaluation of programmes and skills.
- Evaluation and improvement of quality of life of children, adolescents and adults.
- Technology.

Research active groups

- Quality of life
- Inclusive Education
- Employment and Social policies
- Autism and severe disabilities
- Mental health and disability
- Support technologies for people with disabilities
- Disability and gender

COUNSELLING ON UNIVERSITY AND DISABILITY



<http://www.usa.es/adu>

Collaborators

- Grupo Norte Foundation (September 2003)



- Royal Board on Disability (October 2005)



What is ADU?

- Definition:
 - Nationwide information and counselling service.
 - Provide information related to access and stay for university students with disabilities.
 - Bridge between Secondary and Higher Education.
 - Refer students with disabilities to specific Services of the Spanish universities.

What is ADU?

- Provide information about:
 - University Programs and Services
 - Access and participation
 - Scholarships, grants
 - Applicable regulations
 - Specialized Library
 - News
 - Interesting links
 - Frequent Asked Questions
- Aimed at:
 - Students with disabilities, researchers, teachers, administration and services staff, volunteers, families and anyone interested on this field.

<http://www.usal.es/adu>

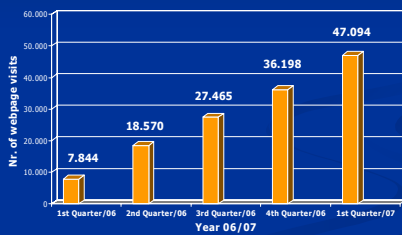


Sections

- Universities: Programs and Services
- Legislation
- Library
- News
- Meetings
- Interesting Links
- FAQ

Webpage visits

Increase on Webpage visits



FAQ's

■ Users:

- Professionals: 60%
- Students: 31%
- Family members: 5%

■ Contact:

- E-mail: 62%
- Phone: 25%
- In person: 7%

FAQ's

■ Issues:

■ Financial counselling:

- Exemption from fees payment.
- Financial support (technical aids, travel and personal assistance)

■ Erasmus programme:

- Information about support services, special equipment and facilities, accessibility in higher education institutions in Europe.
- Erasmus grants.

FAQ's

■ Issues:

■ Choice of Studies:

- Universities, degrees (bachelor, master, doctor), courses, training programmes, distance learning.
- Admission and enrolling information.

■ Disability Services Offices:

- Supports and resources.
- Contact persons.
- Statistics.

FAQ's

- Issues:
 - **Employment:**
 - Job opportunities
 - **Curricula accommodations.**
 - **Accessibility.**
 - **Technical Aids.**
 - **Specialized bibliography:**
 - books, articles, conference proceedings, thesis, reports,...

FAQ's

- Issues:
 - **Applicable regulations:**
 - National level.
 - Regional level.
 - University level.
 - **Scholarships:**
 - Studies abroad.
 - Research.
 - Post-graduate courses.
 - Training programmes.
 - **Accommodation.**
 - **Students associations.**

Spanish Universities situation

- 73 Spanish universities (50 public and 23 private)
- Positive discrimination measures
- Disability Services Offices
 - Implemented during the 90's.
 - 55 universities have specific Disability Services Offices (85% public and 15% private)
 - Different functioning and organization.
 - Diverse professional backgrounds.

Related Studies

- European Space for Higher Education: good practices indicators and guidelines to favour equal opportunities for students with disabilities in the university.
- Factors that determine the access to Higher Education of students with disabilities from Secondary Education.
- Libraries accessibility at the University of Salamanca. Equal conditions to access to information.

Contact info

- E-mail: adu@usal.es
- Phone: +34 923 29 48 36
- Address:
Asesoramiento sobre Discapacidad y Universidad, ADU
Facultad de Psicología, Universidad de Salamanca
Avda. de la Merced, 109-131. 37005 Salamanca (Spain)

Thank you very much



maribel@usal.es
