

The importance of interaction between People with or without Learning disabilities

Helena Petersson
helena@perigus.com

25 March 2011

Content

Backgrounds

Personal

The Schools system for pupils with intellectual disabilities

LSS - a legislation

Workshop as an example of interaction

An art studio and a theatre

Research

This presentation is build on my experiences from my work with people with **intellectual disabilities**, (IQ 70 and less)

Personal background

Teacher for pupils with intellectual disabilities

Founder of Inuti - an art studio in Stockholm

Consultant at Mosaik - a Theatre and
Dance group in Stockholm

Student of Disability Studies at Halmstad Högskola

The School system for pupils with intellectual disabilities

- A school with its own curriculum for pupils with a diagnosed intellectual disability
- 9 year mandatory, start at age 7 (1.4 % 12 700 pupils)
- 1 extra year
- 4 year Upper secondary education - optional (2.4 % 9 400 pupils)

January 2011

An inquiry for an improved Upper secondary education

Increased opportunities

Continued education as an adult

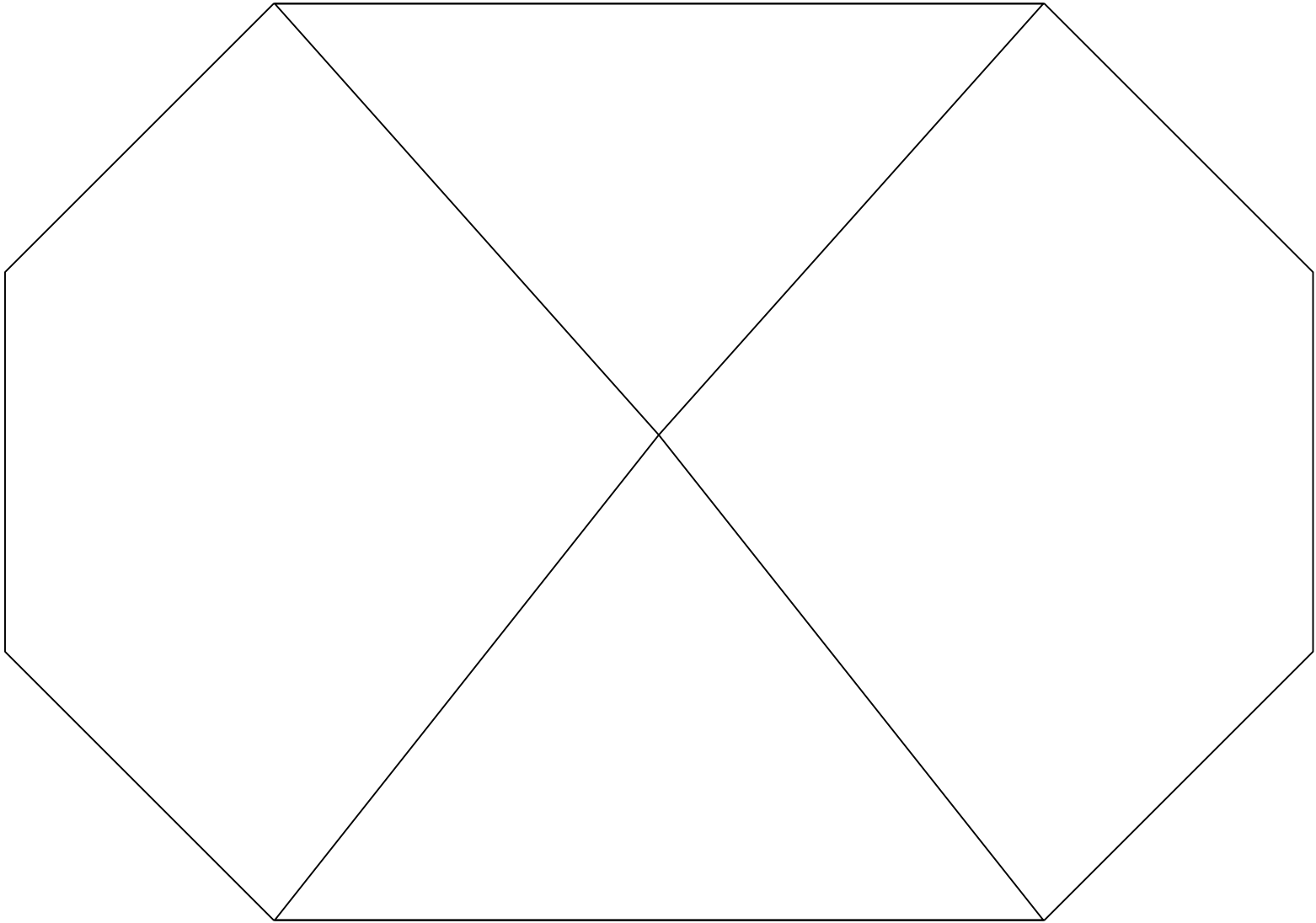
LSS an Act

concerning Support and Service for Persons with Certain Functional Impairments

- 1. advice and other personal support that requires special knowledge about problems and conditions governing the life of a person with major and permanent functional impairments,
- 2. help from a personal assistant or financial support for reasonable costs for such help to the extent that the need for financial support is not covered by assistance benefit pursuant to the Assistance Benefit Act (1993:389),
- 3. escort service,
- 4. help from a personal contact,
- 5. relief service in the home,
- 6. short stay away from the home,
- 7. short period of supervision for schoolchildren over the age of 12 outside their own home in conjunction with the school day and during the holidays,
- 8. arrangements for living in a family home or in residential arrangements with special service for children and young people who need to live away from their parental home,
- 9. residential arrangements with special service for adults or some other specially adapted residential arrangements for adults,
- **10. daily activities for people of a working age who have no gainful employment nor are doing a training.**

27 000 (10) / 56 800 (LSS) / 9.5 miljon(Swedes)

Arenas such as exhibition, network, schools, working places,
Workshops



Workshops

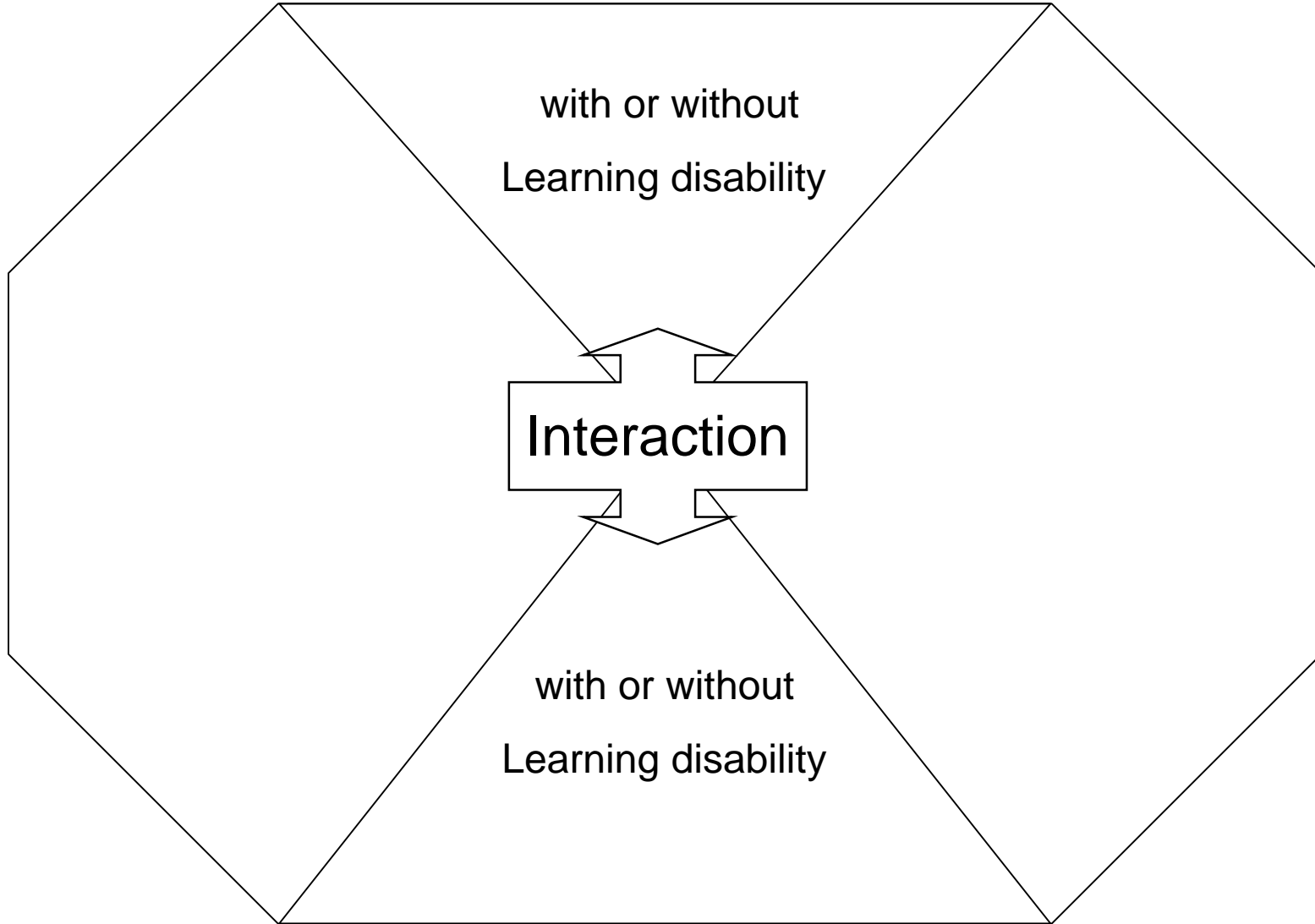
Leaders

with or without
Learning disability

Interaction

with or without
Learning disability

Participants



Workshops

Leaders

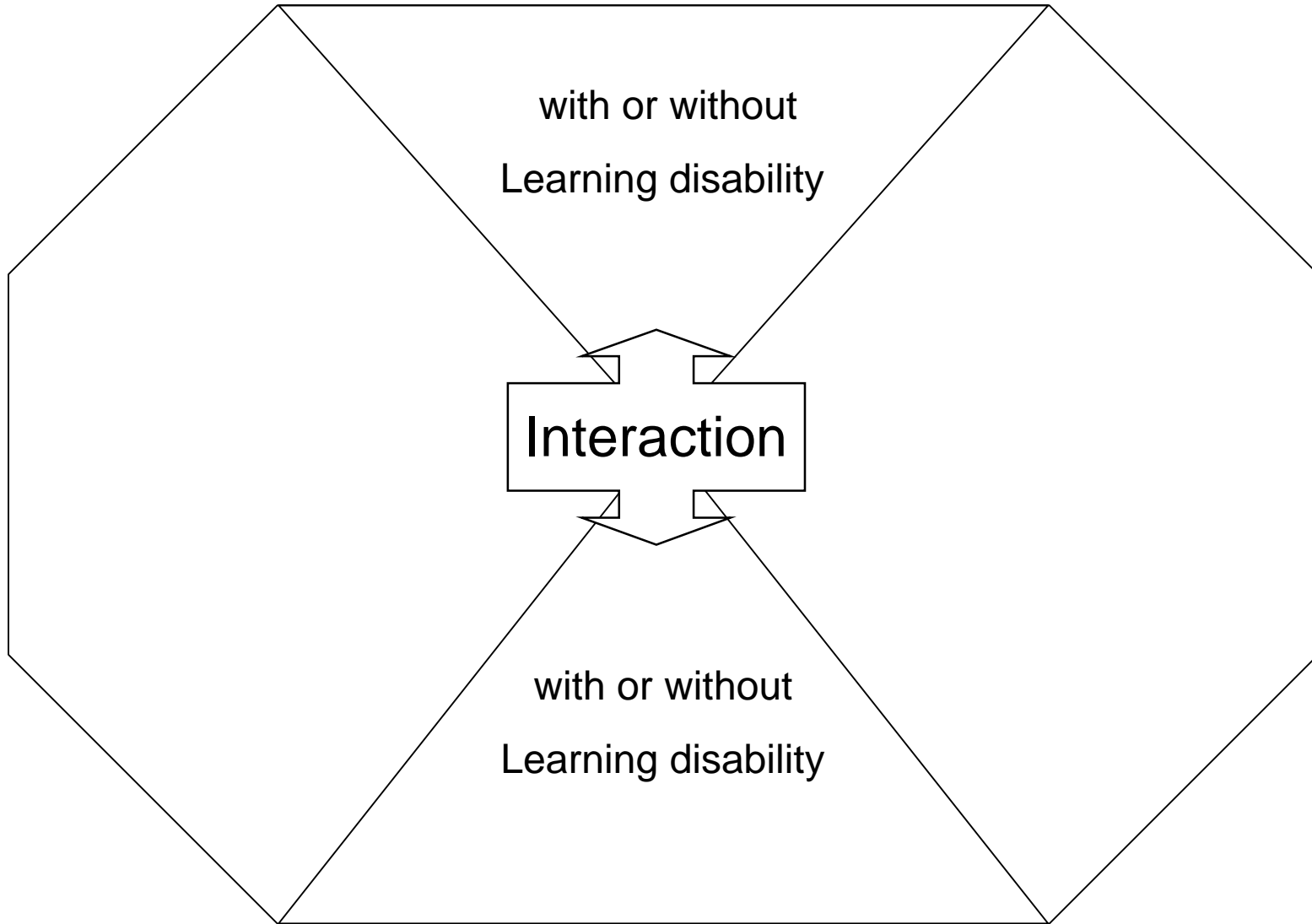
with or without
Learning disability

Interaction

with or without
Learning disability

Participants

**O
u
t
c
o
m
e**



Workshops

Leaders

with or without
Learning disability

New Perspectives

Shared experiences

Increased understanding

Interaction

with or without
Learning disability

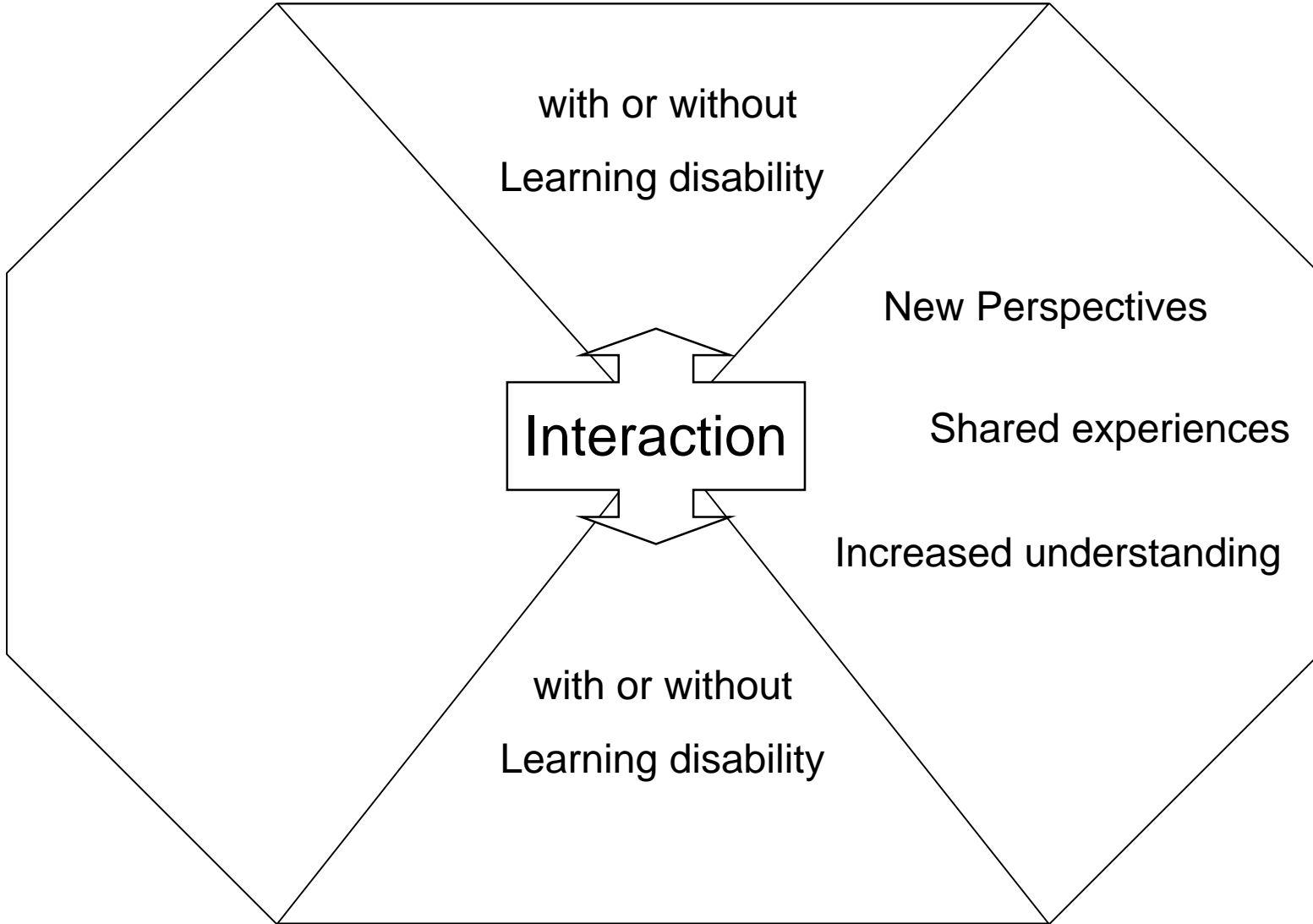
O
u
t
c
o
m
e

Participants

Workshops

Leaders

T
O
O
L
S

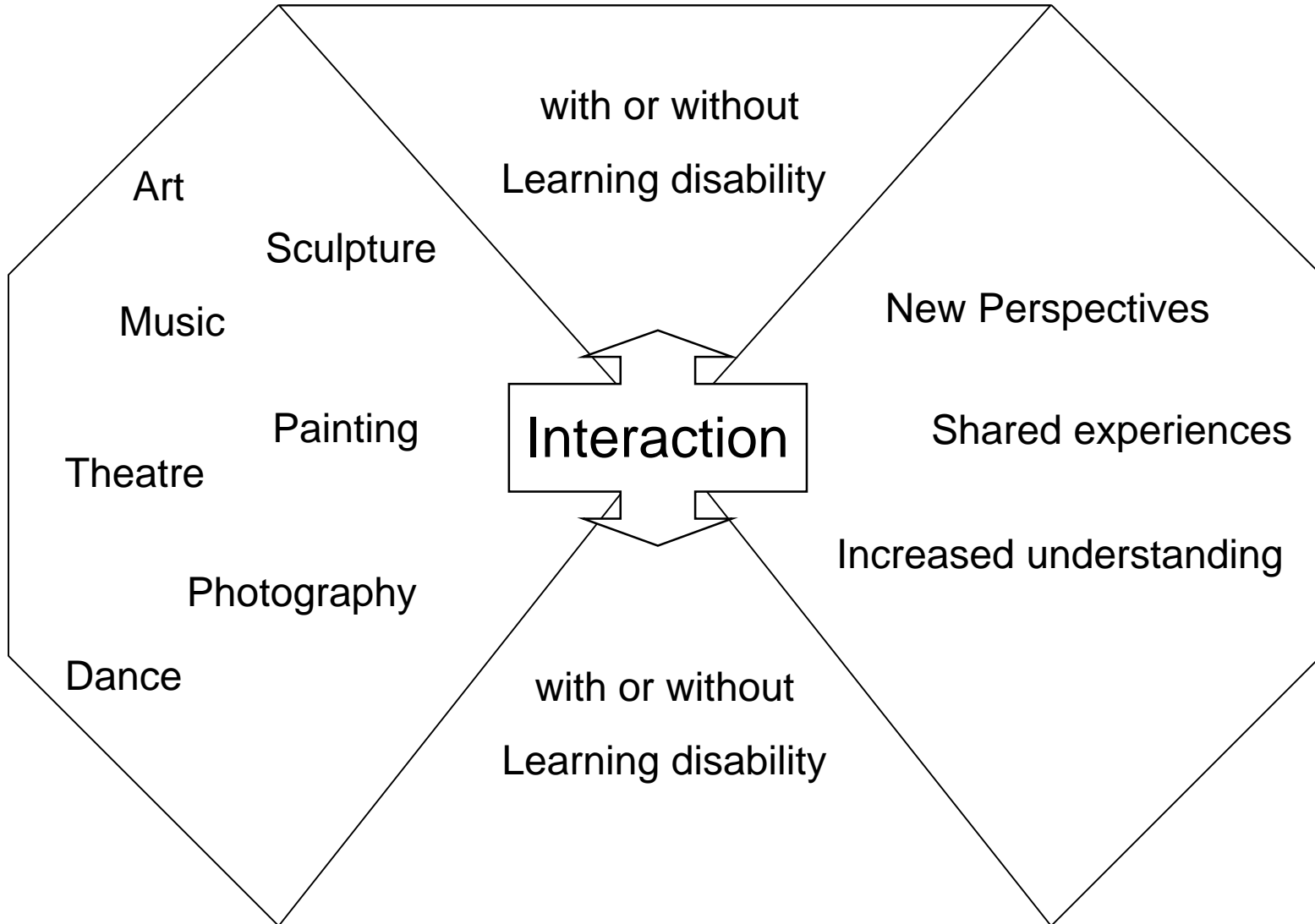


O
u
t
c
o
m
e

Workshops

Leaders

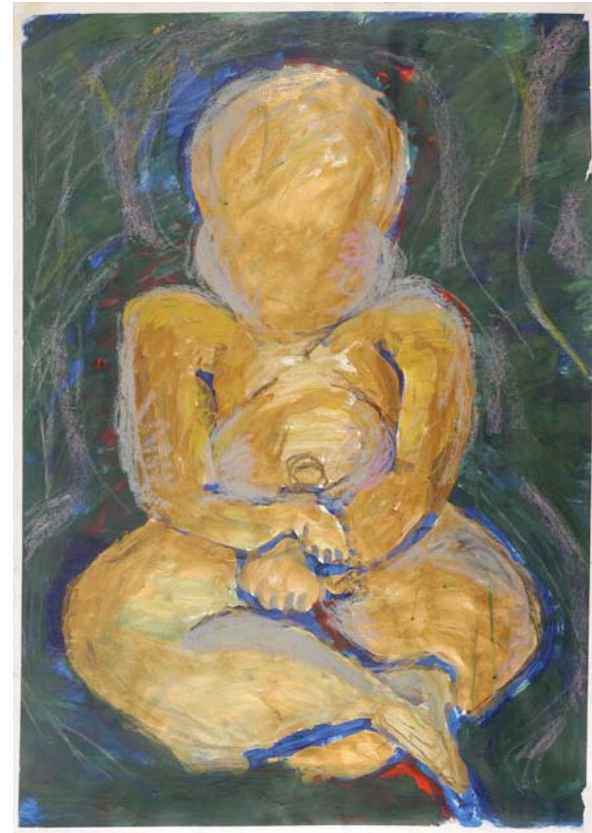
T
O
O
L
S



O
u
t
c
o
m
e

Participants

New perspectives



Shared experiences
through shared
workingplaces

Working at an individual
Artists studio

Shared experiences through Networking

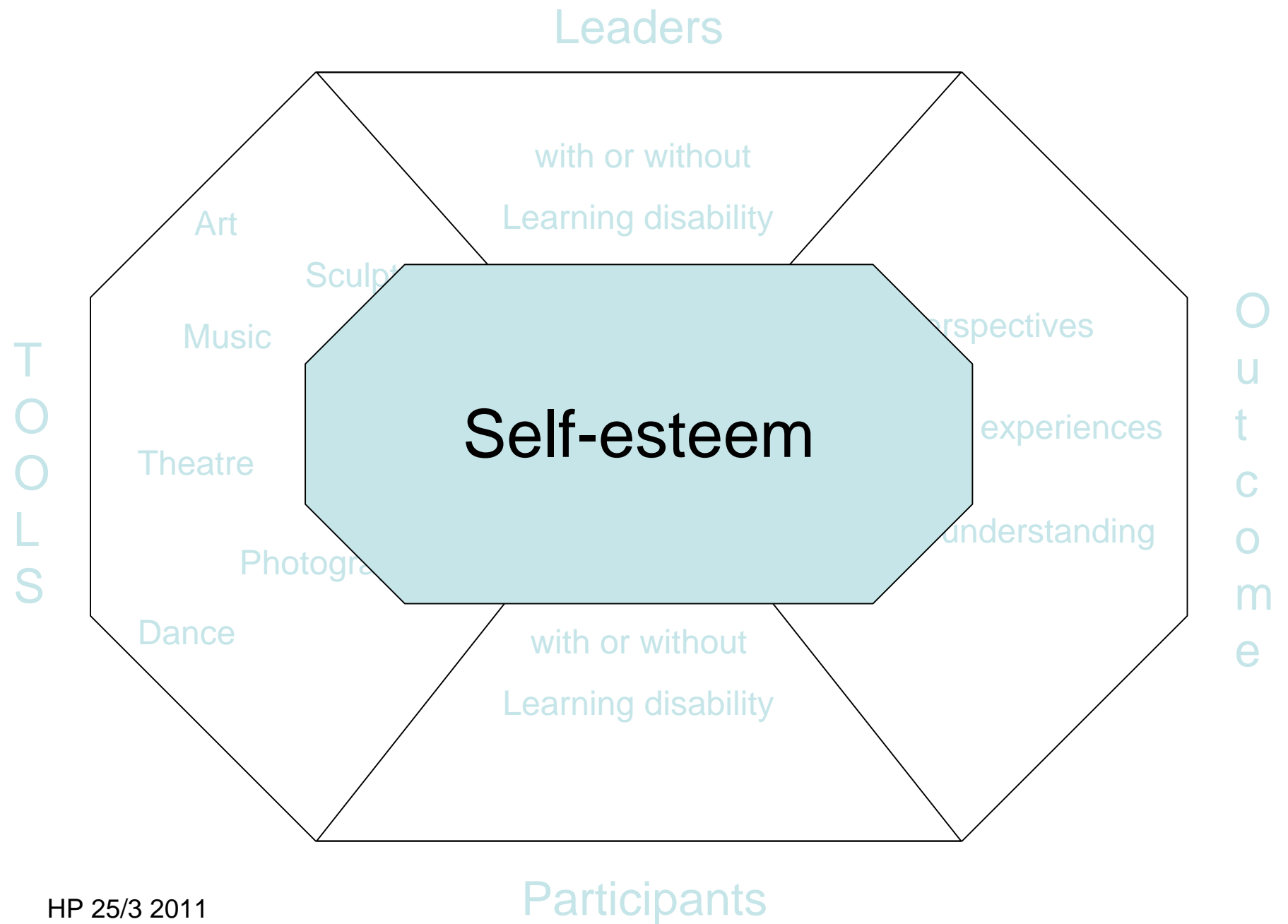
www.outsiderartassociation.eu

www.gaiamuseum.dk

Increased understanding through Exhibitions

Maria showed her paintings of Swedish Kings and Queens at a museum close to the Royal Castle, Stockholm, spring 2010

She is invited to exhibit next summer, 2012, at a prestigious art hall in the south of Sweden



Self-esteem



Research

Theatre and Intellectual Disability.

A study of the Ålla Theatre.

Lennart Sauer, Umeå University, 2004, ISBN 91-7305-78-780-8

Conflict in association between

art and intellect / intellectual disabilities and dependency

Carmen a political theme

They used art to question our beliefs.

Research

Between art and therapy.

About theatre for people with intellectual disabilities.

Jens Ineland, Umeå University, 2007. ISBN 978-91-7264-292-8

One conclusion in the thesis is that theatre within the field of disability practises on an organisational level must relate to two different logics in order to receive legitimacy, that has generated ambivalence in the daily work.

Two examples

An Art Studio

Inuti (means inside)

Started 1996

Non -profit foundation
with aim to produce
professional art and
self-esteem

Organized and
financed through LSS

Exhibitions
Workshops
Networking

www.inuti.se



Professional theatre

MOOMS theatre

Started 1987

A non-profit foundation with sole aim to produce professional integrated staggeart of high artistic quality

Permanently employed on equal terms, equal wages (not LSS)

Trained at the national theatre academy

Financed in the same way as other small theatres in Sweden

www.moomsteatern.com

Legislation a hinder for individual growth?

Art, music, theatre - tools for inclusion?